

## Course Outline for: **Confined Space Awareness** **Entrant & Attendant**

**Course number:** ES00-02

**Course Length:**  
7 hours, 1 Day

**Pre-requisites:**  
None

**Course Record:**  
Confined Space Entry Awareness, Entrant/ Attendant  
Developed by Envirosafety Confined Space Equipment  
Inc., ©2010

**Texts and Equipment:**

**Required:**

Atmospheric monitor, blower/ventilator, rescue retrieval equipment (Tripod or Davit arm) for demonstration.

**Recommended:**

Confined space entry program, hazard assessment and safe work procedures including the entry permit.

**Provided:**

Printed copy of WorksafeBC, Part 9 Regulations.

Course workbook, handouts, exercises, exams, pens, wallet certificates, hard hat sticker certificates.

Employer will receive copies of all participants' certificates within 24 hours of course completion.

**Course Description and Goals:**

This course is intended for any personnel that will be working around, entering or, providing stand-by for confined spaces. It will outline the requirements of a confined space program, as well, real case scenarios will be examined. Participants will look at confined space example and identify hazards associated with them. When combined with an adequate confined space program and safe-work procedures, this course meets the basic training requirements that allow workers to enter into confined spaces as required by WorksafeBC. Demonstration will include gas detector calibration & use, Blower setup and use, & Tripod or Davit-arm set-up and use. This course is not designed to provide the skills needed to provide external rescue or to enter a space to rescue workers.

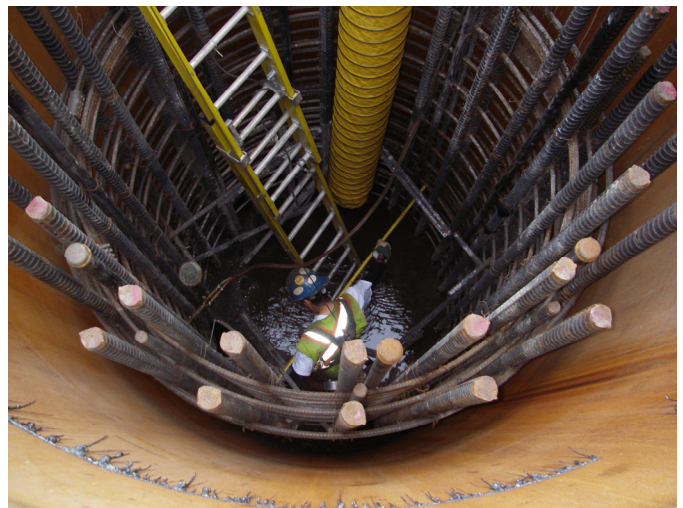
**Method of course delivery:**

60% Lecture & Discussions

20% Demonstration

20% Student Exercises

Student/instructor ratio- 1 instructors per 12 students



**Evaluation:**

100% Written Test

**Topics of instruction within this course include, but are not limited to:**

- ✚ Confined Space Program
- ✚ WorksafeBC Part 9 Regulations
- ✚ Identifying Confined Spaces on your job site
- ✚ Hazard assessment process
- ✚ Hazard controls
- ✚ Atmospheric testing requirements
- ✚ Venting, purging, inerting requirements
- ✚ Lockout/isolation requirements
- ✚ Entry permits
- ✚ Stand-by persons
- ✚ Rescue requirements
- ✚ Personal Protective Equipment
- ✚ Entry equipment



**Course Learning Outcomes:**

Upon completion of this course, the participant will be able to:

- ✚ Aid in development of a confined space entry program for the workplace.
- ✚ Identify confined spaces.
- ✚ Identify confined space hazards.
- ✚ Identify appropriate personal protective equipment.
- ✚ Establish control measures to eliminate or minimize hazards.
- ✚ Understand the hazard assessment process.
- ✚ Understand entry and safe work procedures.
- ✚ Understand proper selection, setup & use of gas detector, ventilator/blower and rescue retrieval equipment.
- ✚ Understand stand-by person duties.

**Course Policies and Information:**

**Exams:**

The minimum score to receive a “pass” in an exam or course is 70%. If a student fails an exam, they may apply for one opportunity to re-write the exam. The student must arrange to take the re-write exam within thirty days of the original exam. Re-write exams will be of a similar nature, scope and content to the original exam, but with new examinable content.

